

FETTE COMPACTING

TALKS

7º SEMINÁRIO SOBRE
TENDÊNCIAS TECNOLÓGICAS
DO MERCADO FARMACÊUTICO

FETTE
COMPACTING

TALKS
TECHNOLOGY

FETTE
COMPACTING

TALKS
COMPETENCE

FETTE
COMPACTING

TALKS
SERVICE

Step in new dimensions PT-Generation – i-Generation - Efficiencyⁱ

- Patented first exchangeable turret in the market with cams and punches
- First Bus System in the market
- First in the market with air sorting out technology
- Segment Technology patented by FETTE Compacting
- Torque drive technology
- Pmax Technology
- To be continue



Customer Needs



Output

1



Yield

2



Uptime

3



**Tablet
quality**

4



**GMP
compliance**

5



**Machine
quality**

6



**Service
pre/after**

7



**Investment
sensitivity**

8



**Occupational
safety**

9

What's next?

Efficiencyⁱ

The new machine series with its features raises the efficiency of production to a new level.

„efficiency to the i.“

innovative

integrative

intuitive

intelligent



F10i - Flexible and dust-tight
next-generation tablet production

**F
10i**

efficiency

The most important features at a glance:



innovative

Containment Guard –
dust-tight system design

RFID operator login

TRI-EASY Multi-flexible
dust-tight tablet chute



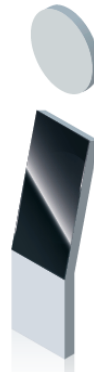
integrative

Cross-generation
system compatibility

Smart**Interface**
by Fette Compacting

New HMI software

Uniform interface for
process equipment



intuitive

Fast and intuitive
cleaning

HMI software
with operating support

Assistance systems
for easy operation



intelligent

Smart**Interface**
by Fette Compacting

location-independent machine
monitoring

Process and
production reliability
thanks to RFID

Recipe-specific,
reproducible
hardware settings

innovative

Dusttight

The new machine series is consistently dusttight even in the standard design. This improves operator protection, minimizes product carryover and room cleaning efforts.

Containment option

As a platform for a wide range of applications, the new i series now combines the quality of its predecessors with an unprecedented level of flexibility for use with moderate containment requirements (containment guard).

High-performance tablet outlet

The tablet process is particularly critical for a stable process. Therefore, it has been completely redesigned with special attention to format flexibility easy handling and dusttight as standard.



efficiency



integrative

efficiency

System compatibility

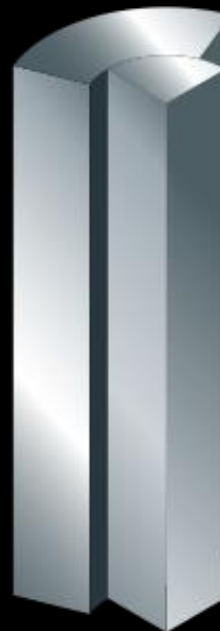
The i series has been characterized for years by its intergenerational system compatibility. This also applies to the machines of the new series.

Minimal revalidation effort

Almost all product-contacting system parts, especially in the pressing process itself, remain unchanged or modified to better performance.

Interfaces

The machines have the technical connectivity that modern production environments require. a. the integration of process equipment via plug-and-play as well as open interfaces for the connection to IoT and MES solutions (OPC-UA).



intuitive

efficiency

Modern HMI

The new, modern HMI with tactile feedback and Ultra Vision Screen enables intuitive control, monitoring and documentation of the machine and the connected process equipment via a terminal.

Workflow Wizard (SOP)

A Workflow Wizard supports the safe and error-free implementation of SOPs.

Even easier and faster cleaning

Cleaning processes cause high costs for the customer. All machines in the new i series are therefore optimized for further minimization of the cleaning effort. These include u. a. 30 percent fewer parts to clean (covers and shroudings), dusttight operation and a touch only terminal.



intelligent

efficiency

Real time monitoring

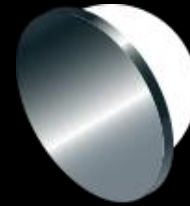
The new “smartinterface” enables the user to monitor the production process via mobile devices and to be always up to date via push messages.

RFID Monitoring

In order to significantly increase process reliability and avoid set-up errors, essential process components are automatically identifiable by the machine and can be saved to the recipe.

Reproducible hardware settings (Scales)

Furthermore, all mechanical settings for product loss and process reliability are designed that they can be set exactly to reproducible settings and also saved to the recipe.



innovative

efficiency



Dusttight in basic design



Containment to the needs





Containment Guard – dusttight system design

- Maximum operator protection
- Containment for an affordable budget
- Most efficient and fastest cleaning ever
- 50% less shrouding parts, with a reduction of 70% surfaces to be cleaned





TRI.Easy Multi-flexible dusttight tablet chute

- From mini-tabs to effervescent tablets
- Safe and extremely fast
- No jamming or destroyed tablets
- Poka Yoke principle
- Fail-safe assembly and dismantling





RFID operator login

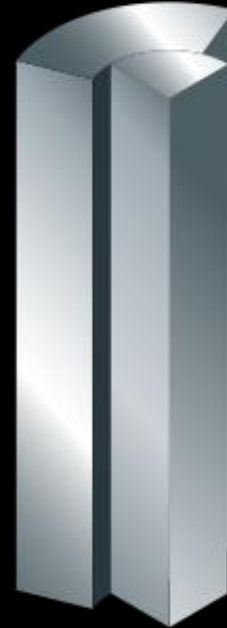
- 21 CFR Part 11 compliant
- Operator login by using RFID technology
- Maximum security in the management of the operators
- Various operating authorizations can be defined



integrative



efficiency



System-compatible set-up to IoT and MES

- Cross-generation system compatibility
- Perfectly integration in existing production environments
- State-of-the-art features for “Pharmaceutical production 4.0”.



Cross-generation system compatibility



- A unified smart interface for the process equipment via Ethernet connection
- Control of all process devices
- Easy monitoring of process equipment

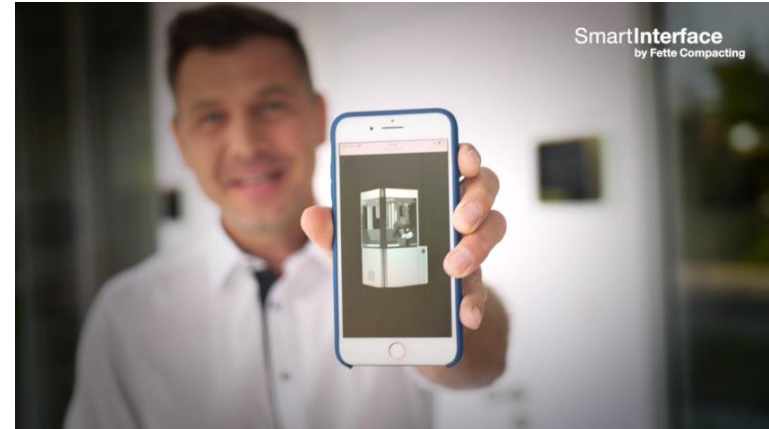




SmartInterface

SmartInterface
by Fette Compacting

- 24/7 Machine real-time monitoring
- Key performance indicator (KPI) dashboard
- Individual and simultaneous monitoring of various parameters
- Identical look & feel the smart interface and user interface (Human-Machine Interface, HMI)

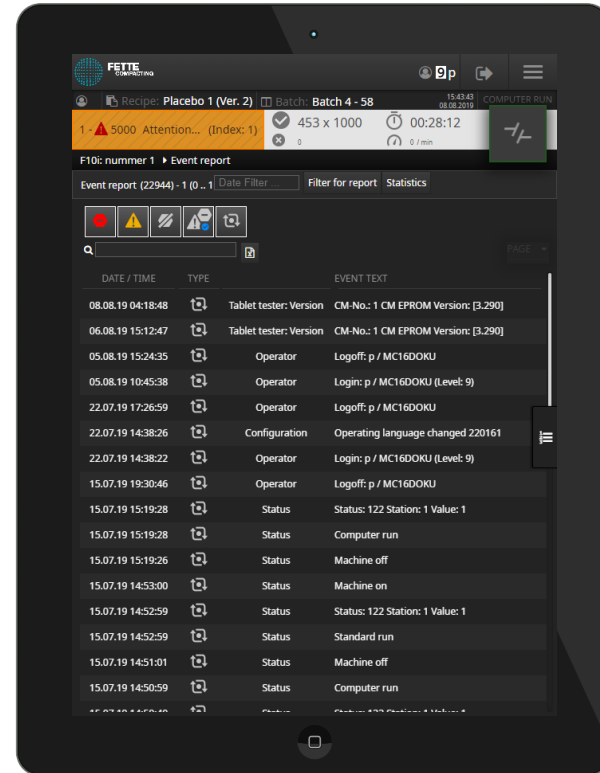




SmartInterface

- Display of changed process parameters compared to standard settings
- Instructions / messages can be sent to the machine-HMI
- Automatic detection of process equipment certified by Fette Compacting

SmartInterface
by Fette Compacting



intuitive

efficiency



Easy handling with tactile HMI and wizard operation

- An ultra-modern human machine interface (HMI)
- Workflow operation wizard



Assistance systems for easy operation



- Easy and fast operation of the tablet press even for inexperienced operators
- Self-explanatory assistance setup
- Intuitive operation thanks to self-explanatory pictograms and symbols
- Errors are practically eliminated

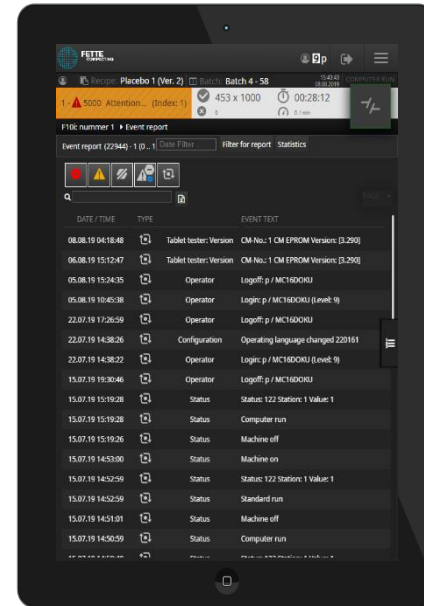


intelligent

efficiency

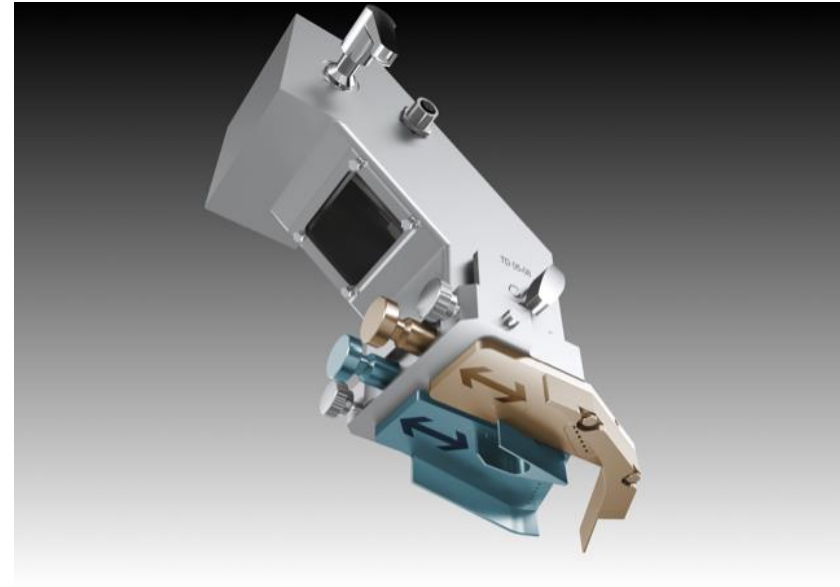
Optimized processes with SmartInterface and RFID

- Server-based, real-time process monitoring
- Batch logs at any time available
- Improved process reliability
- Avoid set-up errors by using RFID
 - Fill Cam
 - Air sorting out
 - Turret identification



Process and production safety through RFID

- Reproducible and correct settings for all products
- Extensive time savings through Poka Yoke principle
- Fast and easy efficient set-up of the machine
- Process stability



Recipe-specific and reproducible hardware settings

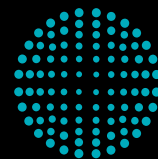
- Process reliability and fail-safe handling
- Faster set-up and reduced set-up times
- Scale values can be saved in the recipe
- Optimized settings independent of operator





CONTAINMENT GUARD

protecting your efficiency



FETTE
COMPACTING
be efficient

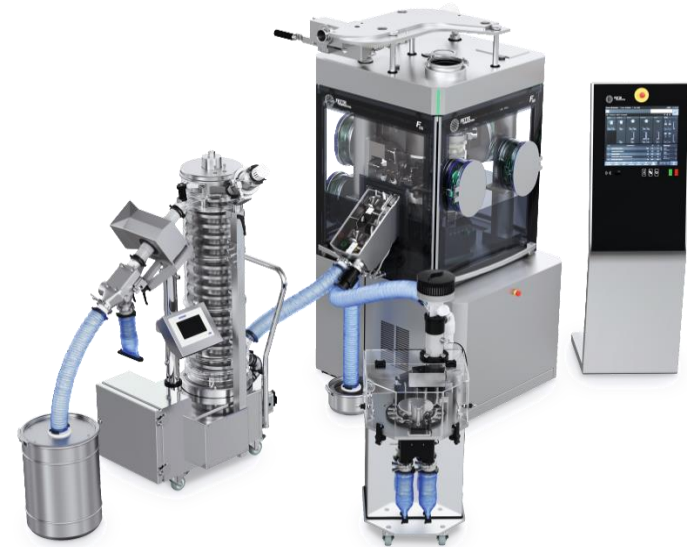
The F10i Containment is the perfect machine for active substances



The F10i Containment is the perfect machine for active substances



- Containment solution to the needs and affordable budget (see Containment 15:30)
- Less complexity
- No contact with active products
- Dusttight press room within the machine
- Fail-safe machine operation and control



Conclusion F10i

- Developed with customer for customer
- Continue the success of the i Generation
- Cross-divisional with early involvement of customers, sales and the subsidiaries
- Involved departments: R & D, design, purchasing, production, training & consulting, service, quality and product management